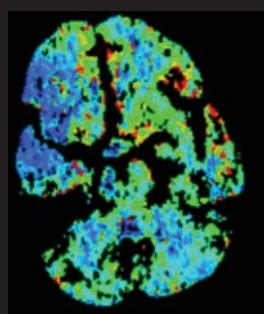
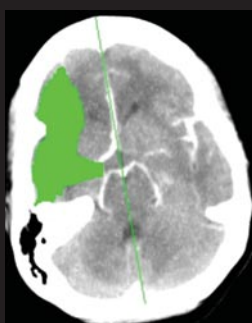
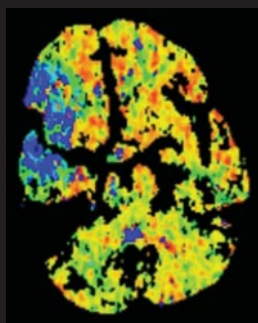


WAKEMED HEALTH & HOSPITALS STROKE PROGRAM
PRESENTS THE SIXTH ANNUAL

Time is Brain

Transitions Across the Continuum



Saturday, October 29, 2011

William F. Andrews Center for Medical Education
WakeMed Raleigh Campus
3024 New Bern Avenue
RALEIGH, NC

PRESENTED BY

WakeMed 
Primary Stroke Program

SPONSORED BY

Wake AHEC
Educating present and future healthcare providers
Part of the North Carolina AHEC Program

SIXTH ANNUAL

Time is Brain

Transitions Across the Continuum

- 7:00 – 8:00 am** **Registration and Breakfast**
- 8:00 – 8:15** **Welcome and Opening**
- 8:15 – 9:15** **Specialty Interface in Emergency Stroke Care**
Objective: Discuss the successful interface of multiple specialties (EMS, Emergency Medicine, Neurology, Neurosurgery and Interventional Neuro-radiology) to optimize outcomes for acute stroke patients.
William A. Knight, IV, MD
- 9:15 – 10:15** **Identifying Unusual Presentations and Causes of Stroke**
Objective: Identify stroke patients who present with less common signs and symptoms.
Mark J. Alberts, MD
- 10:15 – 10:45** **Break/Exhibits**
- 10:45 – 11:45** **Improving Access to Acute Stroke Care via Telestroke:
The Hub and Spoke Perspectives**
Objectives: Describe how telemedicine can improve access to acute stroke therapy; and describe the benefits and challenges to implementing telestroke technology in the spoke hospital.
Charles Tegeler, MD and Brett A. Parkhurst, RN
- 11:45 – 12:45 pm** Lunch
- 12:45 – 1:45** **Guidance for Primary Care in Stroke Treatment and Secondary
Prevention**
Objective: Discuss strategies for maximizing stroke treatment and secondary prevention.
Rhonda Gabr, MD
- 1:45 – 2:00** Break
- 2:00 – 3:00** **Health Literacy 101: Do your Stroke Patients and their Families
Understand You?**
Objectives: Identify how health literacy impacts outcomes after stroke; and list ways the healthcare professional can use health literacy techniques to improve outcomes for stroke patients and their families.
Chrissy Kistler, MD, MASc
- 3:00 – 3:15** **Summary and Wrap-up**

Conference Faculty

Mark J. Alberts, MD
Professor of Neurology
Northwestern University
Feinberg School of Medicine
Director, Stroke Program
Northwestern Memorial Hospital
Chicago, IL

Rhonda Gabr, MD
Neurologist
Raleigh Neurology Associates
Raleigh, NC

Chrissy Kistler, MD, MASc
Assistant Professor
Department of Family Medicine
University of NC-Chapel Hill
Chapel Hill, NC

William A. Knight, IV, MD
Assistant Professor -
Emergency Medicine
Assistant Professor - Neurosurgery
Member - Greater Cincinnati -
Northern Kentucky Stroke Team
University of Cincinnati
Cincinnati, OH

Brett A. Parkhurst, BS, RN
Stroke Program Coordinator
Carteret General Hospital
Morehead City, NC

Charles H. Tegeler, MD
McKinney-Avant Professor
of Neurology
Director, Telestroke Services
Director, Ward A. Riley
Ultrasound Center
Wake Forest Baptist Health
Winston-Salem, NC

Conference Planning Committee

Course Director
Keith Hull, MD, FAAN, FAHA
Director, WakeMed Stroke Center
Raleigh Neurology Associates
Raleigh, North Carolina

Diana Bond, PhD (c), RN-BC
Director, CME, Pharmacy Education,
Library & Quality Services
Wake AHEC

**Tina Dennis, MSN, RN, CCRN,
CNRN, APRN**
Neuroscience Clinical Nurse Specialist
WakeMed Health & Hospitals

Kimberly Elks, BSN, RN, CCM
Stroke Program Coordinator
WakeMed Health & Hospitals

Betsy Gaskins McClaine, MSN-C, RN
Vice President, Heart and Vascular Services
WakeMed Health & Hospitals

Desiree Hunter, BSN, RN, CNRN
Manager, 5B Neurosciences
WakeMed Health & Hospitals

Cindy Kiphuth
Project Coordinator
Wake AHEC

**Jeannie Moore, BSN, RN,
CCRN, NE-BC**
Interim Director, Heart Center Operations
Heart and Vascular Services Administration
WakeMed Health & Hospitals

Tanya Smallwood, MSN, RN, ANP-C
Cardiology Midlevel
Heart & Vascular Services
WakeMed Health & Hospitals

For more information

Call 919-350-0455 or toll free 1-866-341-1814 or
email ckiphuth@wakemed.org

Purpose

The purpose of this conference is to provide healthcare professionals with strategies to improve continuity of stroke care and outcomes.

Target Audience

This conference is designed for physicians, physician assistants, nurse practitioners, nurses, rehab therapists, and others who care for stroke patients.

Course Credit

CME: The Wake Area Health Education Center designates this live activity for a maximum of 5.25 *AMA PRA Category 1 Credits*[™]. Physicians should claim credit commensurate with the extent of their participation in the activity. Other health professionals will receive Wake AHEC CEUs and a certificate of attendance from an *AMA PRA Category 1 Credits*[™] activity. These certificates are accepted by the NC Boards for physician assistants, nurse practitioners, nurses, pharmacists, and respiratory therapists. License requirements are subject to change. Wake AHEC recommends that participants contact their licensing boards for specific questions.

Wake AHEC CEU .5

.5 (5.25 contact hours)

Commission for Case Manager Certification (CCMC)

Application for CCMC credit has been filed with the Commission for Case Manager Certification. Determination of credit is pending.

Accreditation

The Wake Area Health Education Center is accredited by the North Carolina Medical Society to providing continuing medical education for physicians.

Disclosure

The Wake Area Health Education Center adheres to ACCME Essential Areas and policies regarding industry support of continuing medical

education. Commercial support for the program and faculty relationships within the industry will be disclosed at the activity. Speakers will also state when off-label or experimental use of drugs or devices is incorporated in their presentations.

Course Fees

Registration Fee - \$104; after October 21 - \$114
WakeMed Employees: \$89; after October 21 - \$99 (Badge will be required upon check in.)
Fee includes breakfast, lunch, access to conference materials and continuing education credit.

Cancellations and Refunds

No refunds or vouchers will be issued unless Wake AHEC is notified by 5 pm on Friday, October 21. A \$30 cancellation fee will be deducted from the registration fee if a refund is issued. Substitutes are encouraged.

ADA Statement

Wake AHEC is fully committed to the principle of equal education opportunities for all individuals and does not discriminate on the basis of any characteristic protected by federal or state law. If you require any of the auxiliary aids or services identified in the Americans with Disabilities Act in order to participate in this conference, please call us at 919-350-0455 no later than ten business days before the date of the activity.

Inclement Weather

Call 919-350-8547 or toll free 1-866-341-1814 for inclement weather.

Location & Directions

William F. Andrews Center for Continuing Medical Education
WakeMed Raleigh Campus
3024 New Bern Avenue
Raleigh, NC 27610
Directions and parking information will be e-mailed with your confirmation.



Primary Stroke Program

3000 New Bern Avenue

Raleigh, NC 27610

TIME IS BRAIN: Transitions Across the Continuum
SATURDAY, OCTOBER 29

Non profit Org.
U.S. Postage
P A I D
Raleigh, NC
Permit NO. 1307