

Mode: Multi  
PSeq: HE  
ST/1  
TR: 617  
TE: 10.0  
256x192/2.0  
FOV: 24 cm  
Thick: 3.0 mm  
Eseq: 15:03:59

WAKEMED HEALTH & HOSPITALS STROKE PROGRAM  
PRESENTS THE SECOND ANNUAL

# Time is Brain

Advances in Stroke Care Conference

Thursday, October 18 &  
Friday, October 19, 2007

RALEIGH, NC

The William F. Andrews Center for Medical Education  
3024 New Bern Avenue



In partnership planning with WakeMed Nursing Education

SPONSORED BY

**Wake AHEC**

Educating present and future healthcare providers

Part of the NC AHEC Program

SECOND ANNUAL

# Time is Brain

## Advances in Stroke Care Conference

Thursday, October 18

7:45 am **Registration**

8:30 am

**Acute Stroke Therapy 2007**

*Richard Bernstein, MD, PhD*

9:30 am **Break**

10 am

**Dysphagia Screening,  
Evidence, Tools and Methods**

*Timothy Shepherd, PhD, CNS*

11 am

**Acute Management  
of the Critically Ill  
Hypertensive Patient**

*Mary Zellinger, RN, MN, ANP-BC,  
CCAN-CSC*

12 pm **Lunch**

1 pm

**Life Participation Approach  
to Aphasia: Building Bridges  
in the Community**

*Maura Silverman, MS, CCC-SLP*

2 pm **Break**

2:30 pm

**Ongoing Research in  
Promising New Stroke  
Treatment Methods**

*Keith Hull, MD, FAAN*

3:30 pm

**Wrap-up and Evaluations**

3:45 pm **Adjourn**

Friday, October 19

8:00 am **Registration**

8:30 am

**Medical Therapy for Secondary  
Stroke Prevention**

*Larry Goldstein, MD, FAHA, FAAN*

9:30 am **Break**

10 am

**Critical Care for  
Cerebrovascular Patients**

*Christine Wijman, MD*

11 am

**The Use of Imaging Methods  
for the Detection of Carotid  
Stenosis**

*Allison Baird, MD*

12 pm **Lunch**

1 pm

**Acute Stroke Intervention:  
A Multi Modal Approach**

*Alex Abou-chebl, MD*

2 pm **Break**

2:15 pm

**Case Studies in  
Stroke Intervention**

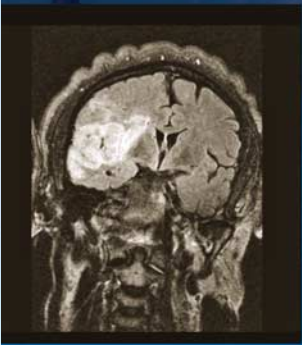
*Ravish Sachar, MD*

3:15 pm

**Wrap-up and Evaluations**

3:30 pm **Adjourn**

All program content can be used for stroke education hours.



## Objectives

At the end of the educational activity, participants will be able to:

- > Recognize the clinical tools and evidence behind acute stroke therapy
- > Recognize the rationale behind clinical decision making in acute intracerebral hemorrhage
- > Describe the basic mechanisms involved in swallowing and impairments after stroke
- > Discuss the current research regarding swallowing assessment
- > Discuss strengths and weaknesses of currently tested and validated dysphagia screening tools
- > Describe the pathology of hypertension
- > Differentiate between hypertension emergency and hypertensive urgency
- > Review pharmacologic treatment options available
- > Discuss changes in aphasia treatment concurrent to healthcare changes
- > Define the progression of speech therapy for aphasia
- > Identify and utilize the five principles of supported communication with a person with aphasia
- > Discuss the importance of life style changes for secondary prevention
- > Discuss options for antiplatelet therapy and anticoagulants
- > Discuss the role of lipid lowering therapy
- > Recognize the indicators and risk of therapeutic hypothermia in post-cardiac arrest
- > Recognize the stroke mimics in the Intensive Care Units
- > Discuss how to manage malignant MCA infarctions
- > List the indications for endovascular therapy for acute stroke
- > Describe the components of the multimodal approach
- > Discuss the limitations of endovascular therapy.

## Purpose

The purpose of this program is to provide practicing clinicians with an update on new treatments and best practices for stroke patients.

## Target Audience

This conference is for physicians, physician assistants, pharmacists, nurse practitioners, nurses, physical rehab therapists and others who care for stroke patients.

## Conference Faculty

### **Course Director**

**Keith Hull, MD, FAAN, FAHA**  
Director, WakeMed Stroke Center  
Raleigh Neurology Associates  
*Raleigh, NC*

### **Alex Abou-chebl, MD**

Interventional Neurologist  
Director of Interventional Neurology  
University Hospital  
*Louisville, KY*

### **Allison Baird, MD, PhD**

Chief, Stroke Neuroscience Unit  
NINDS/NIH  
*Bethesda, MD*

### **Richard Bernstein, MD, PhD**

Associate Professor of Neurology  
Stroke Program  
Feinberg School of Medicine of  
Northwestern University  
*Chicago, IL*

### **Larry Goldstein, MD, FAAN, FAHA**

Duke University Medical Center  
Professor of Medicine (Neurology)  
Director, Duke Center for  
Cerebrovascular Disease  
Senior Fellow, Center for Clinical  
Health Policy Research  
*Durham, NC*

### **Ravish Sachar, MD**

Interventional Cardiologist  
Wake Heart and Vascular Associates  
*Raleigh, NC*

### **Timothy Shephard, PhD, CNS**

Neuroscience CNS/STROKE Program  
Design and Development  
Bon Secours Health System  
*Richmond, VA*

### **Maura Silverman, MS, CCC-SLP**

Triangle Aphasia Project  
WakeMed Rehab  
WakeMed Health & Hospitals  
*Raleigh, NC*

### **Christine Wijman, MD**

Assistant Professor of Neurology  
and Neurological Sciences  
Director, Critical Care Neurology  
Stanford Stroke Center  
*Palo Alto, CA*

### **Mary Zellinger, RN, MN, ANP-BC, CCAN-CSC**

Clinical Nurse Specialist  
Cardiovascular and Critical Care  
Services  
Emory University Hospital  
*Atlanta, GA*

## Conference Planning Committee

### **Keith Hull, MD, FAAN, FAHA**

Course Director  
Medical Director  
WakeMed Stroke Center  
Raleigh Neurology Associates

### **Diana Bond, MS, RN**

Program Services Director  
Wake AHEC

### **Carol Cecile, RN, CNRN**

Clinical Educator/Supervisor  
5B Neurosciences  
WakeMed Health & Hospitals

### **Toni Chatman, MHA**

Assistant Director of CME  
Wake AHEC

**Melissa Craft, RN, BSN, CNRN**  
Clinical Educator/  
Supervisor, Neuro ICU  
WakeMed Health & Hospitals

**Tina Dennis, RN, MSN, CCRN, CNRN, CNS**  
Manager, Neuro ICU  
WakeMed Health & Hospitals

**Kimberly Elks, RN, BSN, CCM**  
Stroke Program Coordinator  
WakeMed Health & Hospitals

**Leigh L. Foushee, PharmD**  
Associate Director of  
Pharmacotherapy Services  
Wake AHEC

**Betsy Gaskins McClaine, RN, BSN, MSN-C**  
Vice President, Heart and  
Vascular Services  
WakeMed Health & Hospitals

**Diana Hocutt, RN**  
Clinical Educator/  
Supervisor, 5B Neurosciences  
WakeMed Health & Hospitals

**Desiree Hunter, RN, BSN, CNRN**  
Manager, 5B Neurosciences  
WakeMed Health & Hospitals

**Cindy Kiphuth**  
Meeting Planner, Wake AHEC

**Kelly Pate, MSN, FNP-C**  
Nurse Practitioner  
Raleigh Neurology Associates

**John Smith, MD**  
AAFP Course Director  
Medical Director  
Blue Cross Blue Shield

**Jane Stewart, RN, BSN, BC, CNRN**  
Education Resource Specialist  
Nursing Education  
WakeMed Health & Hospitals

**Marian Uy, RN, BSN, CCRN**  
Coordinator, CHF Program  
WakeMed Health & Hospitals

**Mary Ellen Wells, RN**  
Admissions Consultant  
WakeMed Rehab  
WakeMed Health & Hospitals

## Course Credit

CME: The Wake Area Health Education Center designates this educational activity for a maximum of 10.5 AMA PRA Category 1 Credits™. Physicians should claim credit commensurate with the extent of their participation in the activity.

## American Academy of Family Physicians

Application for CME credit has been filed with the American Academy of Family Physicians. Determination of credit is pending.

## American College of Emergency Physicians

10.5 total hours - Application has been made to the American College of Emergency Physicians for ACEP Category 1 Credit

## Pharmacy

This program is acceptable to the North Carolina Board of Pharmacy for 5.25 contact hours per day of continuing pharmaceutical education credit. This program is not accredited by the Accreditation Council for Pharmacy Education (ACPE).

## Nursing Credit

5.25 contact hours each day, CNE (Continuing Nursing Education) Wake AHEC, Nursing Education is an Approved Provider of continuing nursing education by the North Carolina Nurses Association, an accredited provider by the American Nurses Credentialing Center's Commission on Accreditation.

Participants must attend 100% of each day to receive credit. Partial credit will not be given.

## Registration Fee

\$90 per day  
\$75 per day - WakeMed Employees (Badge will be required upon check-in.) Fee includes meals, break refreshments, conference materials and continuing education credit.

## Accreditation

The Wake Area Health Education Center is accredited by the North Carolina Medical Society to provide continuing medical education for physicians.

## Disclosure

The Wake Area Health Education Center adheres to ACCME Essential Areas and policies regarding industry support of continuing medical education. Commercial support for the program and faculty relationships within the industry will be disclosed at the activity. Speakers will also state when off-label or experimental use of drugs or devices is incorporated in their presentations.

## Cancellations and Refunds

No refunds or vouchers will be issued unless Wake AHEC is notified by 5 pm on October 4, 2007. A \$30 cancellation fee will be deducted from the registration fee if a refund is issued. Substitutes are encouraged.

## ADA Statement

Wake AHEC is fully committed to the principle of equal education opportunities for all individuals and does not discriminate on the basis of any characteristic protected by federal or state law. If you require any of the auxiliary aids or services identified in the Americans with Disabilities Act in order to participate in this conference, please call us at 919-350-8547 no later than ten business days before the date of the activity.

## Location & Directions

The Andrews Conference Center  
WakeMed Raleigh Campus  
3024 New Bern Avenue  
Raleigh, North Carolina  
Directions and parking information will be mailed with your confirmation.

## Inclement Weather

Call 919-350-8547 and press 3 for the inclement weather schedule.





**Primary Stroke Center**

*3000 New Bern Avenue*

*Raleigh, NC 27610*

**TIME IS BRAIN: Advances in Stroke Care Conference**  
**OCTOBER 18 & 19, 2007**

---

Pre-Sort  
First Class Mail  
U.S. Postage  
P A I D  
Raleigh, NC  
Permit NO. 1307